

FACT BOOK - FALL 2011



**MALONE
UNIVERSITY**
CHRIST'S KINGDOM FIRST



MALONE UNIVERSITY FACT BOOK

Table of Contents

Section I Student Data	2
Enrollment Summary; Student/Faculty Ratio (Tables)	3
Enrollment Summary (Graph)	4
Undergraduate Enrollment Analysis	5
Graduate Enrollment Analysis	6
Students from Stark County High Schools	7
Enrollment by State of Origin	8
Students by Ethnicity; Countries Represented by International Students	9
Religious Affiliation of Traditional Undergraduates	10
Freshman Class Statistics	11
Section II Faculty Data	12
Fall 2011 Faculty FTE Report	13
Distribution of Faculty by School/Department and Highest Degree	14
Distribution of Faculty by School/Department and Rank	15
Full-time Faculty by Highest Degree (Historical)	16
Full-time Faculty by Rank, Gender, and Ethnicity (Historical)	17
History of Average FT Faculty Years of Service	18
Mean/Median Faculty Salaries by Rank (Historical)	19
Section III Academic Data	20
Enrollment by Major: 1-Yr Detail; 10-Yr History	21-22
Total Student Hours by School/Department	23
Summer School Student Hours by School/Department	24
Undergraduate Summer School Statistics	25
Comprehensive Enrollment Summary/Total Individuals Served	25
Library Holdings and Circulation	26
Section IV Retention and Graduation Data	27
Longitudinal Retention and Graduation Rates	28
Major Field Analysis by # of (UG) Graduates: 1-Yr Detail; 10-Yr History	29-30
Program Area Analysis by # of Master's Graduates: 10-Yr History	31
Post-Graduation Activities of 2010 Graduates	32-36
Section V Financial Data	37
Ten-Year History of Tuition, Room, and Board Charges	38
Total Budget by Fiscal Year	39
Malone Fund Income	40
Total Gift Income	41

Section I

Student Data

ENROLLMENT SUMMARY - Fall 1976 to Fall 2011

HEADCOUNT

FTE

YEAR	UNDERGRAD	GRAD	TOTAL	YEAR	UNDERGRAD	GRAD	TOTAL
1976-77	896		896	1976-77	832.0		832.0
1977-78	850		850	1977-78	780.0		780.0
1978-79	782		782	1978-79	742.0		742.0
1979-80	772		772	1979-80	740.0		740.0
1980-81	776		776	1980-81	729.0		729.0
1981-82	770		770	1981-82	729.0		729.0
1982-83	872		872	1982-83	749.0		749.0
1983-84	876		876	1983-84	716.0		716.0
1984-85	919		919	1984-85	772.0		772.0
1985-86	1039		1039	1985-86	879.0		879.0
1986-87	1048		1048	1986-87	891.0		891.0
1987-88	1205		1205	1987-88	1028.0		1028.0
1988-89	1325		1325	1988-89	1116.0		1116.0
1989-90	1457		1457	1989-90	1230.0		1230.0
1990-91	1515	46	1561	1990-91	1294.7	29.3	1324.0
1991-92	1607	94	1701	1991-92	1367.5	50.1	1417.6
1992-93	1714	91	1805	1992-93	1462.1	43.9	1506.0
1993-94	1820	109	1929	1993-94	1590.6	53.2	1643.8
1994-95	1876	128	2004	1994-95	1644.4	60.8	1705.2
1995-96	1896	120	2016	1995-96	1709.3	67.0	1776.3
1996-97	1909	192	2101	1996-97	1717.3	117.0	1834.3
1997-98	2013	226	2239	1997-98	1835.7	133.1	1968.8
1998-99	1968	262	2230	1998-99	1834.8	160.7	1995.5
1999-00	1957	244	2201	1999-00	1821.0	155.1	1976.1
2000-01	1951	217	2168	2000-01	1871.9	132.7	2004.5
2001-02	1917	239	2156	2001-02	1822.5	148.0	1970.5
2002-03	1889	257	2146	2002-03	1819.2	167.4	1986.6
2003-04	1943	270	2213	2003-04	1819.1	174.0	1993.1
2004-05	1939	314	2253	2004-05	1856.5	200.9	2057.4
2005-06	1936	357	2293	2005-06	1834.0	237.4	2071.4
2006-07	1968	336	2304	2006-07	1866.0	225.8	2091.8
2007-08	2035	350	2385	2007-08	1903.0	229.9	2132.9
2008-09	2046	409	2455	2008-09	1902.7	279.4	2182.1
2009-10	2208	430	2638	2009-10	2030.8	284.6	2315.3
2010-11	2098	429	2527	2010-11	1974.0	304.8	2278.8
2011-12	1965	475	2440	2011-12	1866.6	334.4	2201.0

STUDENT:FACULTY RATIO SUMMARY - Fall 2005 to Fall 2011

ST: FAC RATIO	FALL '05	FALL '06	FALL '07	FALL '08	FALL '09	FALL '10	FALL '11
	13.9:1	13.7:1	14.1:1	14.0:1	14.8:1	14.5:1	13.4:1

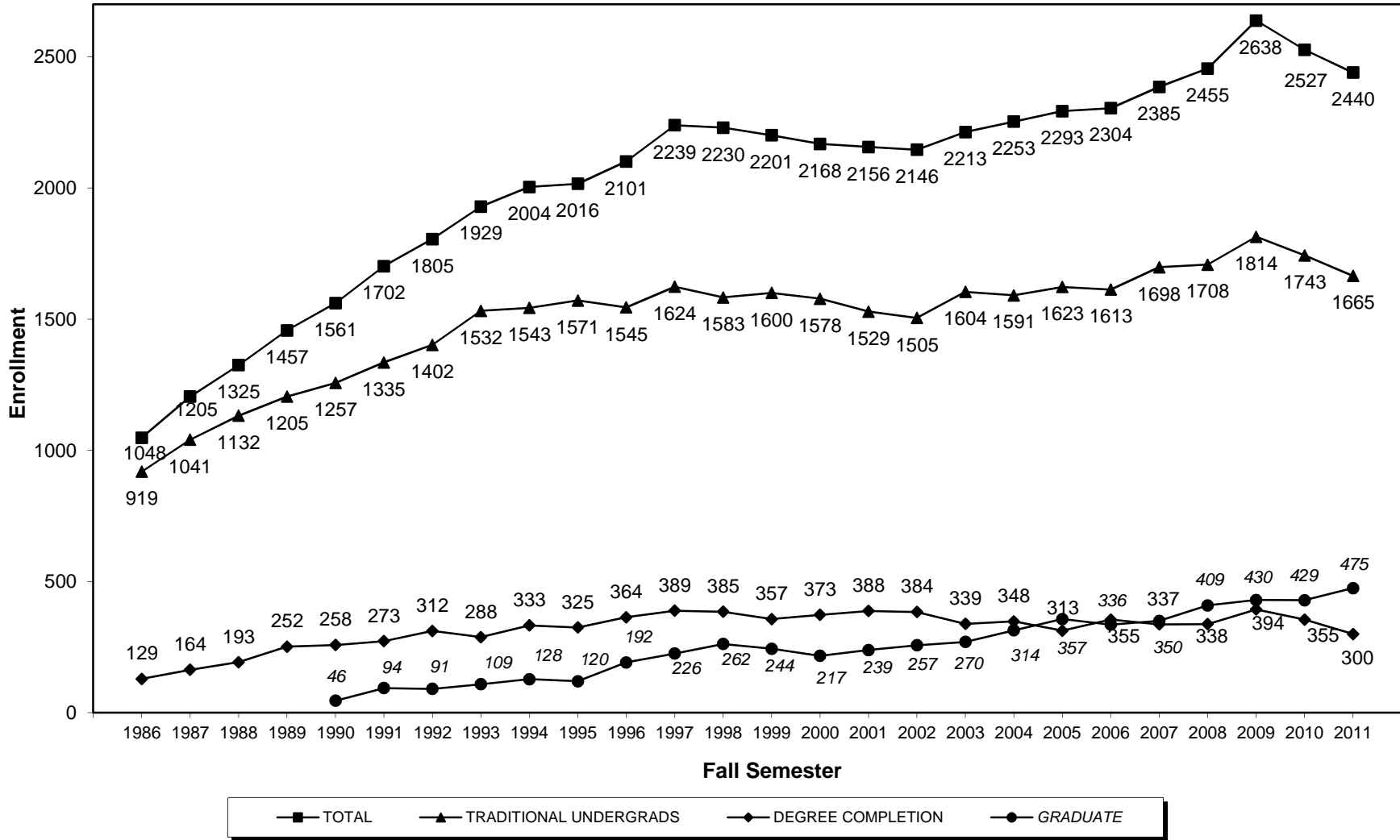
NOTE: The formula used for calculating the above ratio is as follows:

All full-time plus 1/3 of part-time students to all full-time plus 1/3 of part-time faculty.

FT faculty includes those whose classroom teaching comprises 50% or more of their total load hours.

PT faculty does not include FT Malone personnel who teach in addition to their regular positions, supervisors of student teachers/interns/research practicums, or instructors of applied music lessons.

HISTORY OF FALL ENROLLMENTS BY HEADCOUNT



UNDERGRADUATE ENROLLMENT ANALYSIS

Fall Semester

	<u>2007-08</u>	<u>2008-09</u>	<u>2009-10</u>	<u>2010-11</u>	<u>2011-12</u>
TOTAL ENROLLMENT	2029	2046	2208	2097	1964
BY ACADEMIC CLASSIFICATION					
Freshman	551	533	641	546	505
Sophomore	309	361	344	367	327
Junior	325	306	351	348	369
Senior	423	397	366	379	376
Unclassified (inc. PSEs and other non-DS)	72	111	70	52	47
Transient (for 2007-08 through 2008-09, Transient included with Unclassified)			2	0	0
Degreed (for 2007-08 through 2008-09, Degreed included with Unclassified)			40	52	41
MMP-FT (inc. online)	277	256	284	263	222
MMP-PT (inc. Portfolio, Project, other)	23	38	72	66	55
BSNDC	49	44	38	24	22
BY STUDENT LOAD*					
Full-time (12 or more hours)	1501	1481	1573	1544	1503
Part-time (less than 12 hours)	179	227	241	200	159
BY SEMESTER HOURS					
Total	23868.5	24122.0	25319.5	25008.5	24111.0
Part-time	1299.5	1716.5	1685.5	1513.5	1134.5
Full-time Equivalent (15/sem)	1591.2	1608.1	1688.0	1667.2	1607.4
FTE - MMP (36/3 trimesters)	279.0	262.0	316.4	287.9	244.2
FTE - BSNDC	34.7	31.2	26.4	17.5	15.0
BY GENDER					
Men	783	820	894	863	828
Women	1246	1226	1314	1234	1136
BY RESIDENCE					
Resident	989	1003	1105	1052	1057
Men	394	399	467	453	473
Women	595	604	638	599	584
Commuter	1040	1043	1103	1045	907
Men	389	421	427	410	355
Women	651	622	676	635	552

DETAIL FOR FALL 2011*

				New		Re-Admits		Continuing	
	<u>Full-time</u>	<u>Part-time</u>	<u>Total</u>	<u>FT</u>	<u>PT</u>	<u>FT</u>	<u>PT</u>	<u>FT</u>	<u>PT</u>
Freshman	495	10	505	394	5	1	1	100	4
Sophomore	319	8	327	49	1	1	1	269	6
Junior	349	20	369	21	3	2	0	326	17
Senior	330	46	376	1	0	4	1	325	45
Unclassified**	0	44	44	0	36	0	2	0	6
Transient	0	0	0	0	0	0	0	0	0
Degreed	10	31	41	2	4	2	2	6	25
Totals	1503	159	1662	467	49	10	7	1026	103

* No MMP or RN/BSN students included

** Includes PSEs, Auditors, other Non-degree-seeking students

GRADUATE ENROLLMENT ANALYSIS

Fall Semester

HEADCOUNT by hours

	Full-time*		Part-time	<u>Total</u>
	<u>6 -> 8.5</u>	<u>9 ></u>	<u>.5 -> 5.5</u>	
Business	69	7	21	97
Counseling	105	29	16	150
Education	24	2	32	58
Leadership	47	19	6	72
Nursing	61	0	1	62
Theological Studies	26	3	8	37
TOTAL	332	60	84	476

* Full-time status based on enrollment in 6 hours or more.

CREDIT HOUR DISTRIBUTION

	<u>.5 -> 5.5</u>	<u>6 -> 8.5</u>	<u>9 ></u>	<u>Total</u>	<u>FTE**</u>
Business	67	415	63	545	60.6
Counseling	48	632	279	959	106.6
Education	66	148	18	232	25.8
Leadership	21	364	192	577	64.1
Nursing	3	488	0	491	54.6
Theological Studies	24	156	27	207	23.0
TOTAL	229	2203	579	3011	334.6

** Full-time equivalent based on 9 hours.

BY ENROLLMENT STATUS

	<u>New***</u>	<u>Readmit***</u>	<u>Continuing</u>	<u>Total</u>
Business	21	0	76	97
Counseling	37	0	113	150
Education	21	2	35	58
Leadership	19	4	49	72
Nursing	27	1	34	62
Theological Studies	4	0	33	37
TOTAL	129	7	340	476

*** New or Re-admitted (in Summer 2011 or Fall 2011) to the program listed

BY GENDER

	<u>Male</u>	<u>Female</u>	<u>Total</u>
Business	61	36	97
Counseling	24	126	150
Education	11	47	58
Leadership	30	42	72
Nursing	10	52	62
Theological Studies	22	15	37
TOTAL	158	318	476

Comprehensive Summary of Graduate Enrollment

	<u>2005-06</u>	<u>2006-07</u>	<u>2007-08</u>	<u>2008-09</u>	<u>2009-10</u>	<u>2010-11</u>
Graduate Student Enrollment						
Fall	399	431	454	567	574	539
New Students and Re-Admits						
Spring	141	153	221	194	191	195
Summer (all sessions)	<u>195</u>	<u>313</u>	<u>293</u>	<u>389</u>	<u>413</u>	<u>338</u>
Total Individuals Served	735	897	968	1150	1178	1072

STUDENTS FROM STARK COUNTY HIGH SCHOOLS

	2007-08	2008-09	2009-10	2010-11	2011-12
CANTON					
McKinley	21	25	31	35	44
Timken	5	7	13	12	10
Central Catholic	9	6	16	13	12
Subtotal	<u>35</u>	<u>38</u>	<u>60</u>	<u>60</u>	<u>66</u>
ALLIANCE					
Alliance	5	7	11	6	3
MASSILLON					
Washington	16	10	20	23	24
NORTH CANTON					
Hoover	28	30	36	36	33
Subtotal	<u>49</u>	<u>47</u>	<u>67</u>	<u>65</u>	<u>60</u>
STARK COUNTY					
Canton South	16	13	13	12	8
East Canton	17	22	16	17	15
Fairless	23	23	18	15	13
Glen Oak	39	38	44	37	26
Heritage Christian	18	15	14	17	16
Jackson	29	29	29	31	42
Lake	35	31	34	37	27
Lake Center Christian	7	13	20	26	25
Louisville	20	21	17	22	33
Marlington	25	24	26	22	21
Massillon Christian	5	3	2	2	2
Minerva	15	16	12	18	17
Northwest	16	11	16	15	15
Perry	36	45	47	38	41
Sandy Valley	18	16	10	11	11
St. Thomas Aquinas	4	4	2	5	7
Tuslaw	17	16	16	18	15
Subtotal	<u>340</u>	<u>340</u>	<u>336</u>	<u>343</u>	<u>334</u>
Home Schooled	<u>63</u>	<u>70</u>	<u>88</u>	<u>64</u>	<u>63</u>
GRAND TOTAL	487	495	551	532	523

Note: PSE students are included. Adult degree-completion students and graduate students are not included.

STUDENT ENROLLMENT BY STATE

Note: PSE and DE students are included. Degree-completion and graduate students are not included.

	2004-05	2005-06	2006-07	2007-08	2008-09	2009-10	2010-11	2011-12
Alabama	0	0	0	0	0	1	1	1
Alaska	2	2	1	1	1	1	2	1
Arizona	0	1	1	3	3	2	2	4
California	0	2	8	9	10	13	18	21
Colorado	4	2	2	1	0	0	0	0
Connecticut	1	1	0	0	1	4	4	7
Delaware	1	2	2	2	2	1	1	1
Florida	5	6	3	4	39	26	6	12
Georgia	0	0	2	3	4	4	4	2
Hawaii	0	0	0	0	0	3	2	2
Idaho	0	0	0	0	1	1	1	1
Illinois	3	2	3	1	3	5	5	6
Indiana	7	6	6	10	8	6	3	3
Iowa	2	1	0	0	0	0	0	0
Kansas	0	1	0	1	1	0	0	0
Kentucky	1	0	1	1	1	3	1	0
Louisiana	0	0	0	0	0	1	0	0
Maine	0	1	1	1	2	1	1	0
Maryland	2	1	2	5	7	7	7	6
Massachusetts	3	4	3	3	2	1	4	5
Michigan	9	8	12	9	8	19	11	12
Minnesota	0	0	1	2	1	1	1	0
Missouri	0	0	0	1	1	2	2	1
Montana	0	1	1	1	1	1	1	1
Nebraska	0	0	0	0	0	1	0	0
Nevada	2	0	1	1	1	0	2	2
New Hampshire	1	0	1	1	0	1	1	1
New Jersey	7	6	5	6	3	7	6	6
New Mexico	0	0	0	0	1	0	0	0
New York	25	20	20	19	23	23	21	26
North Carolina	0	0	0	2	8	4	5	3
Oklahoma	0	0	1	0	1	1	0	0
Pennsylvania	99	100	113	126	120	121	104	90
Rhode Island	0	0	0	0	1	0	0	0
South Carolina	1	1	0	0	0	1	2	2
South Dakota	0	0	0	0	0	1	0	0
Tennessee	1	1	0	1	1	1	2	2
Texas	0	0	5	4	2	4	3	2
Utah	1	0	0	0	0	0	0	0
Virginia	6	8	8	5	6	4	2	3
Washington	0	0	0	0	0	0	0	4
West Virginia	7	7	8	6	7	4	5	3
Wisconsin	2	1	2	2	2	1	0	0
Non-Ohio Subtotals	192	185	213	231	272	277	230	230
Ohio	1381	1407	1373	1426	1416	1499	1486	1408
Internationals	16	21	26	23	20	22	28	24
U.S. Citizens Residing Outside the 50 States	2	2	1	n/a	n/a	n/a	n/a	n/a
GRAND TOTAL	1591	1615	1613	1680	1708	1798	1744	1662

KRW091911

STUDENTS BY RACE/ETHNICITY

Number/% of Total	2005		2006		2007		2008		2009		2010		2011	
	N	%	N	%	N	%	N	%	N	%	N	%	N	%
Am Indian/Alask Nat	4	0.2	6	0.3	7	0.3	8	0.3	10	0.4	5	0.2	2	0.1
Asian	10	0.4	13	0.6	15	0.6	16	0.7	18	0.7	22	0.9	12	0.5
Black/Non-Hispanic	150	6.6	150	6.6	160	6.8	171	7.0	219	8.4	196	7.8	216	8.9
Caucasian	2075	91.7	2072	91.0	2128	90.4	2182	89.7	2297	87.9	2205	88.3	2097	86.8
Hispanic	18	0.8	22	1.0	26	1.1	31	1.3	31	1.2	20	0.8	46	1.9
Nat Hawaiian/Pac Is													2	0.1
Two or more races													24	1.0
Unknown*	6	0.3	13	0.6	19	0.8	25	1.0	38	1.5	49	2.0	16	0.7
Total	2263	100.0	2276	100.0	2355	100.0	2433	100.0	2613	100.0	2497	100.0	2415	100.0

* In Fall 2010, 12 students from Hong Kong enrolled in an online MMP cohort were included.

INTERNATIONAL STUDENTS

	2005	2006	2007	2008	2009	2010	2011
Antigua and Barbuda	0	0	0	0	0	1	1
Argentina	0	0	0	0	0	0	0
Australia	0	1	1	1	2	2	1
Belarus	1	1	0	0	0	0	0
Bolivia	1	1	1	1	0	0	0
Brazil	0	0	0	0	3	6	5
Bulgaria	0	0	0	0	0	1	1
Burundi	1	2	2	2	1	1	1
Cameroon	0	1	0	1	0	0	0
Canada	0	1	0	0	1	0	1
China	1	2	0	1	1	1	0
Colombia	0	0	0	0	0	2	2
Congo	1	1	1	2	2	1	1
Egypt	0	0	0	0	1	0	0
Finland	0	0	0	1	1	2	2
Ghana	1	1	1	1	0	0	0
Greece	0	1	1	0	0	0	0
Ireland	0	0	0	1	1	1	1
Jamaica	0	0	0	1	1	1	1
Kenya	1	1	1	0	0	0	0
Liberia	0	0	0	0	0	1	2
Mexico	1	1	5	2	2	1	1
Romania	1	1	1	0	0	0	0
Serbia	0	0	0	0	1	1	0
South Africa	1	1	1	1	1	1	2
South Korea	0	0	0	1	1	1	1
Spain	1	1	1	0	1	1	1
Taiwan	0	0	1	2	2	1	0
Tanzania	1	1	0	0	0	0	0
Trinidad	1	1	1	0	0	0	0
Uganda	0	0	0	0	0	0	1
United Kingdom	7	7	4	3	2	2	0
Venezuela	0	1	1	1	0	0	0
Yugoslavia	1	0	0	0	0	0	0
Zambia	1	1	1	0	0	0	0
Total	22	28	24	22	24	28	25

RELIGIOUS AFFILIATIONS

	2004	2005	2006	2007	2008	2009	2010	2011
African Methodist Episcopal	1	2	0	0	0	1	1	0
American Baptist	2	2	1	1	0	1	1	4
Anglican	1	1	1	3	1	3	3	2
Apostolic	10	7	7	6	7	11	13	11
Assembly of God	40	47	48	50	51	46	44	44
Baptist	180	194	184	183	175	204	198	194
Bible	13	14	13	9	10	6	5	10
Brethren	43	33	48	49	64	55	52	44
Catholic	109	104	98	119	123	121	107	95
Christian	73	66	78	76	75	77	93	113
Christian & Missionary Alliance	57	55	45	52	48	52	40	47
Christian Church Disciples of Christ	3	3	3	2	4	4	7	8
Christian Reformed Church in America	3	4	4	5	7	5	8	5
Church of Christ	38	39	31	28	25	41	34	34
Church of God	32	31	38	34	30	30	27	28
Church of Jesus Christ-Latter Day Saints	0	0	0	0	0	0	0	1
Community	3	3	3	3	5	6	7	8
Congregational	2	2	2	3	3	2	2	4
Covenant	1	1	1	1	0	0	0	0
Eastern Orthodox	2	3	4	1	3	4	4	5
Episcopal	4	6	8	9	5	5	4	3
Evangelical	25	34	26	25	17	28	38	31
Free Methodist	25	29	26	32	23	26	20	15
Friends	135	139	143	132	139	141	116	88
Gospel	10	9	4	2	2	2	2	1
Greek Orthodox	1	0	1	1	1	2	2	0
Independent	8	7	9	12	11	8	12	12
Interdenominational	0	0	0	0	0	0	2	2
Judaism	0	1	0	0	0	0	0	0
Lutheran	42	42	42	33	38	41	40	27
Lutheran Church in America	1	2	1	1	1	2	0	0
Lutheran Church - Missouri Synod	1	1	1	0	1	1	2	2
Lutheran, Evangelical	3	3	1	0	0	0	0	4
Mennonite	46	51	57	57	55	57	55	50
Methodist	7	6	7	8	5	5	6	5
Moravian	0	0	0	1	1	1	1	0
Nazarene	36	36	37	46	40	47	46	37
Pentecostal	36	36	34	33	29	25	29	31
Presbyterian	51	41	35	33	36	39	32	22
Presbyterian Church of America (PCA)	0	0	0	0	0	0	0	1
Protestant	3	3	7	4	3	3	3	4
Russian Orthodox	1	1	1	2	2	2	1	0
Salvation Army	5	5	5	5	8	8	9	4
Serbian Orthodox	0	0	0	0	0	1	1	0
Seventh Day Adventist	2	3	2	1	0	1	2	3
Southern Baptist Convention	3	4	5	9	11	5	8	9
United Church of Christ	14	18	20	18	16	12	8	6
United Methodist	129	116	115	124	135	129	106	107
United Presbyterian	3	2	8	7	10	17	11	15
Wesleyan Church	14	12	10	9	4	7	11	11
Wesleyan Methodist	1	2	1	2	2	2	2	1
Non-Denominational	268	283	294	342	364	364	369	333
Other Churches or Religions	39	24	14	12	9	8	5	9
No Church Listed	64	79	90	95	109	140	155	172
Total	1590	1606	1613	1680	1708	1798	1744	1662

Note: PSE and DE students are included. Degree-completion and graduate students are not included.

FRESHMAN CLASS STATISTICS

CLASS SIZE BY ADMISSION STATUS												
Entering class of:	2011	2010	2009	2008	2007	2006	2005	2004	2003	2002	2001	2000
Regular	257	265	346	294	289	257	240	275	276	241	231	260
Honors	69	98	102	62	75	51	73	78	73	81	84	84
Probational (Conditional)	36	13	33	35	28	37	48	50	52	33	41	47
Total New Freshmen	362	376	481	391	392	345	361	403	401	355	356	391
New Transfers	113	112	131	97	122	119	118	72	86	97	72	76

HIGH SCHOOL GRADE POINT AVERAGES BY ADMISSION STATUS												
Entering class of:	2011		2010		2009		2008		2007		2006	
	N = number available	GPA	N	GPA	N	GPA	N	GPA	N	GPA	N	
Regular	3.22	257	3.13	263	3.24	342	3.30	289	3.32	284	3.37	254
Honors	3.85	69	3.84	98	3.91	102	3.88	62	3.88	75	3.86	51
Probational (Conditional)	2.66	36	2.86	12	2.60	33	2.51	35	2.68	28	2.64	35
Total New Freshmen	3.28	362	3.30	373	3.34	477	3.32	386	3.38	387	3.37	340

HIGH SCHOOL CLASS RANK AVERAGES												
Entering class of:	2011		2010		2009		2008		2007		2006	
	For class size > 49	%	N	%	N	%	N	%	N	%	N	
Top Tenth of Class	19.6	54	19.2	56	23.1	89	17.2	50	22.5	70	23.2	63
Top Quarter of Class	46.4	128	43.6	127	48.3	186	46.0	134	48.6	151	50.7	138
Top Half of Class	75.7	209	74.6	217	75.6	291	75.6	220	81.4	253	79.4	216
Total w/class rank		276		291		385		291		311		272

ACT COMPOSITE AVERAGES BY ADMISSION STATUS												
Entering class of:	2011		2010		2009		2008		2007		2006	
	N = number available	ACT	N	ACT	N	ACT	N	ACT	N	ACT	N	
Regular	21.97	223	21.68	231	21.68	314	22.37	262	21.93	243	21.95	219
Honors	27.62	65	27.60	86	27.71	91	27.75	52	27.76	62	26.93	46
Probational (Conditional)	16.72	25	17.40	8	17.47	32	17.60	30	17.77	26	17.72	32
Total New Freshmen	22.73	313	23.14	325	22.63	437	22.77	344	22.69	331	22.26	297

SAT CRITICAL READING (formerly VERBAL) AVERAGES BY ADMISSION STATUS												
Entering class of:	2011		2010		2009		2008		2007		2006	
	N = # available (if > 5)	SAT	N	SAT	N	SAT	N	SAT	N	SAT	N	
Regular	492.06	63	503.79	58	511.56	64	505.97	72	510.52	77	500.16	64
Honors	620.59	17	618.93	28	622.00	25	627.39	23	603.67	30	599.00	20
Probational (Conditional)	420.00	11		2		3	433.33	6				
Total New Freshmen	507.36	91	538.86	88	538.37	92	529.90	101	534.04	109	517.95	88

SAT MATH AVERAGES BY ADMISSION STATUS												
Entering class of:	2011		2010		2009		2008		2007		2006	
	N = # available (if > 5)	SAT	N	SAT	N	SAT	N	SAT	N	SAT	N	
Regular	499.37	63	513.97	58	495.63	64	517.36	72	502.21	77	502.97	64
Honors	602.94	17	615.36	28	616.00	25	620.87	23	586.67	30	596.50	20
Probational (Conditional)	412.73	11		2		3	430.00	6				
Total New Freshmen	508.24	91	543.98	88	525.00	92	535.74	101	523.85	109	518.86	88

Section II

Faculty Data

FALL 2011 FACULTY FULL-TIME EQUIVALENT REPORT

NOTES: PT-INSIDE refers to FT or PT non-faculty employees (> or = 50%) who teach at least 1 course; FTE = teaching load hours divided by 12 (normal semester load)

COLLEGE/SCHOOL Department/Program	FTE-FT	%	FTE-PT (INSIDE)	%	FTE-PT (OUTSIDE)	%	FTE TOTAL	HISTORY TOTAL FTE
DISTRIBUTED LEARNING	0.92	42.3%	0.25	11.5%	1.00	46.2%	2.17	FALL '94
GEN 100/101/150/460; HON 260/370	4.61	69.7%	1.50	22.7%	0.50	7.6%	6.61	116.90
COLLEGE OF THEOLOGY, ARTS, AND SCIENCES								FALL '95
Communication Arts	6.25	83.3%	0.50	6.7%	0.75	10.0%	7.50	121.58
History, Philosophy, and Social Sciences	6.50	78.8%	0.00	0.0%	1.75	21.2%	8.25	FALL '96
Language and Literature	5.77	53.2%	0.00	0.0%	5.08	46.8%	10.85	120.86
Mathematics and Computer Science	4.56	68.6%	0.58	8.8%	1.50	22.6%	6.64	FALL '97
Music	5.14	44.5%	0.00	0.0%	6.40	55.5%	11.54	126.91
Natural Sciences	7.18	72.7%	0.16	1.6%	2.54	25.7%	9.87	FALL '98
Psychology	3.23	69.5%	0.25	5.4%	1.17	25.1%	4.65	133.00
Social Work	2.17	92.4%	0.00	0.0%	0.18	7.6%	2.34	FALL '99
Theology	4.63	54.9%	0.05	0.6%	3.75	44.5%	8.43	140.81
Visual Arts	3.88	85.3%	0.00	0.0%	0.67	14.7%	4.55	FALL '00
SCHOOL OF BUSINESS AND LEADERSHIP								144.35
Business	4.78	73.8%	0.19	3.0%	1.50	23.2%	6.47	FALL '01
SCHOOL OF EDUCATION AND HUMAN DEVELOPMENT								139.57
Education	7.85	56.9%	0.31	2.3%	5.64	40.9%	13.81	FALL '02
SCHOOL OF NURSING AND HEALTH SCIENCES								139.6
Nursing	11.17	64.1%	0.00	0.0%	6.25	35.9%	17.42	FALL '03
Health Sciences	<u>2.00</u>	<u>100.0%</u>	<u>0.00</u>	<u>0.0%</u>	<u>0.00</u>	<u>0.0%</u>	<u>2.00</u>	145.01
<i>Total Undergraduate</i>	80.63	65.5%	3.80	3.1%	38.68	31.4%	123.11	FALL '04
DEGREE COMPLETION								146.95
MMP	3.74	38.3%	1.26	13.0%	4.75	48.7%	9.75	FALL '05
RN/BSN	<u>0.67</u>	<u>34.9%</u>	<u>0.15</u>	<u>7.9%</u>	<u>1.09</u>	<u>57.2%</u>	<u>1.91</u>	145.28
<i>Total Degree Completion</i>	4.40	37.8%	1.41	12.1%	5.84	50.1%	11.66	FALL '06
GRADUATE PROGRAMS								150.07
Business Administration (MBA)	2.06	54.2%	0.00	0.0%	1.74	45.8%	3.80	FALL '07
Counseling/Human Development (MAEd)	3.33	48.4%	0.33	4.8%	3.22	46.8%	6.89	152.9
Education (MAEd)	2.10	66.0%	0.00	0.0%	1.08	34.0%	3.19	FALL '08
Nursing (MSN)	1.33	53.3%	0.00	0.0%	1.16	46.7%	2.49	151.64
Organizational Leadership (MAOL)	3.08	93.3%	0.22	6.7%	0.00	0.0%	3.30	FALL '09
Theological Studies (MATS)	<u>1.58</u>	<u>82.6%</u>	<u>0.00</u>	<u>0.0%</u>	<u>0.33</u>	<u>17.4%</u>	<u>1.92</u>	160.58
<i>Total Graduate</i>	13.49	62.5%	0.56	2.6%	7.54	34.9%	21.58	FALL '10
TOTAL FACULTY FTE	98.51	63.0%	5.77	3.7%	52.07	33.3%	156.35	159.29

**DISTRIBUTION OF 2011-12 FULL-TIME FACULTY MEMBERS*
BY COLLEGE/SCHOOL/Department AND HIGHEST DEGREE**

COLLEGE/SCHOOL Department/Program	DOCTORATE		OTHER TERM**		<=MASTER'S		TOTAL
	#	%	#	%	#	%	
COLLEGE OF THEOLOGY, ARTS, AND SCIENCES							
Communication Arts	3	42.9%	2	28.6%	2	28.6%	7
History, Philosophy, Social Sciences	7	100.0%	0	0.0%	0	0.0%	7
Language and Literature	7	77.8%	0	0.0%	2	22.2%	9
Mathematics and Computer Science	4	80.0%	0	0.0%	1	20.0%	5
Music	5	83.3%	0	0.0%	1	16.7%	6
Natural Sciences	6	75.0%	0	0.0%	2	25.0%	8
Psychology	4	100.0%	0	0.0%	0	0.0%	4
Social Work	2	66.7%	0	0.0%	1	33.3%	3
Theology (inc MATS)	8	100.0%	0	0.0%	0	0.0%	8
Visual Arts	1	25.0%	1	25.0%	2	50.0%	4
SCHOOL OF BUSINESS AND LEADERSHIP							
Business (inc MBA/MAOL)	11	84.6%	0	0.0%	2	15.4%	13
Management Studies	0	0.0%	0	0.0%	6	100.0%	6
SCHOOL OF EDUCATION AND HUMAN DEVELOPMENT							
Education	9	75.0%	0	0.0%	3	25.0%	12
Counseling and Human Development	3	75.0%	0	0.0%	1	25.0%	4
SCHOOL OF NURSING AND HEALTH SCIENCES							
Nursing (inc MSN)	4	30.8%	0	0.0%	9	69.2%	13
Health Sciences	2	100.0%	0	0.0%	0	0.0%	2
ALL	76	68.5%	3	2.7%	32	28.8%	111

* Includes faculty on leave or sabbatical and deans; but, not other administrators or librarians with faculty status.

** Other terminal degree (i.e., J.D., M.Div., M.F.A.)

DISTRIBUTION OF 2011-12 FULL-TIME FACULTY MEMBERS*
BY COLLEGE/SCHOOL/Department AND RANK

COLLEGE/SCHOOL Department/Program	PROFESSOR		ASSOCIATE		ASSISTANT		INSTRUCTOR		LECTURER		TOTAL FAC
	#	%	#	%	#	%	#	%	#	%	
COLLEGE OF THEOLOGY, ARTS, AND SCIENCES											
Communication Arts	3	43%	2	29%	1	14%	1	14%	0	0%	7
History, Philosophy, Social Sciences	6	86%	0	0%	1	14%	0	0%	0	0%	7
Language and Literature	4	44%	1	11%	2	22%	2	22%	0	0%	9
Mathematics and Computer Science	1	20%	2	40%	2	40%	0	0%	0	0%	5
Music	2	33%	3	50%	1	17%	0	0%	0	0%	6
Natural Sciences	3	38%	1	13%	3	38%	0	0%	1	13%	8
Psychology	4	100%	0	0%	0	0%	0	0%	0	0%	4
Social Work	1	33%	1	33%	1	33%	0	0%	0	0%	3
Theology (inc MATS)	4	50%	3	38%	0	0%	1	13%	0	0%	8
Visual Arts	2	50%	0	0%	0	0%	2	50%	0	0%	4
SCHOOL OF BUSINESS AND LEADERSHIP											
Business (inc MBA/MAOL)	9	69%	2	15%	2	15%	0	0%	0	0%	13
Management Studies	0	0%	0	0%	3	50%	3	50%	0	0%	6
SCHOOL OF EDUCATION AND HUMAN DEVELOPMENT											
Education	4	33%	4	33%	3	25%	1	8%	0	0%	12
Counseling and Human Development	0	0%	2	50%	1	25%	1	25%	0	0%	4
SCHOOL OF NURSING AND HEALTH SCIENCES											
Nursing (inc MSN)	1	8%	5	38%	5	38%	2	15%	0	0%	13
Health Sciences	2	100%	0	0%	0	0%	0	0%	0	0%	2
ALL	46	41.4%	26	23.4%	25	22.5%	13	11.7%	1	0.9%	111

* Includes faculty on leave or sabbatical and deans; but, not administrators or librarians with faculty status.

FULL-TIME FACULTY* BY HIGHEST DEGREE EARNED

YEAR	DOCTORATES	OTHER TERMINAL**	<=MASTERS	% DOCTORATES	% DOC + TERM**	TOTAL FACULTY
1992-93	30	1	37	42.9%	44.3%	70
1993-94	31	1	37	43.7%	45.1%	71
1994-95	35	2	38	45.5%	48.1%	77
1995-96	42	2	38	50.6%	53.0%	83
1996-97	44	3	37	51.8%	55.3%	85
1997-98	45	2	40	50.6%	52.8%	89
1998-99	46	3	42	49.5%	52.7%	93
1999-00	55	3	41	55.0%	58.0%	100
2000-01	56	3	46	52.8%	55.7%	106
2001-02	56	5	41	53.8%	58.7%	104
2002-03	59	6	38	57.3%	63.1%	103
2003-04	58	5	37	58.0%	63.0%	100
2004-05	62	7	37	58.5%	65.1%	106
2005-06	68	7	31	64.2%	70.8%	106
2006-07	69	7	35	62.2%	68.5%	111
2007-08	71	4	36	64.0%	67.6%	111
2008-09	76	4	33	67.3%	70.8%	113
2009-10	77	4	34	67.0%	70.4%	115
2010-11	76	4	32	67.9%	71.4%	112
2011-12	76	3	32	68.5%	71.2%	111

* Includes faculty on leave/sabbatical and deans (college; school), but not administrators or librarians with faculty status.

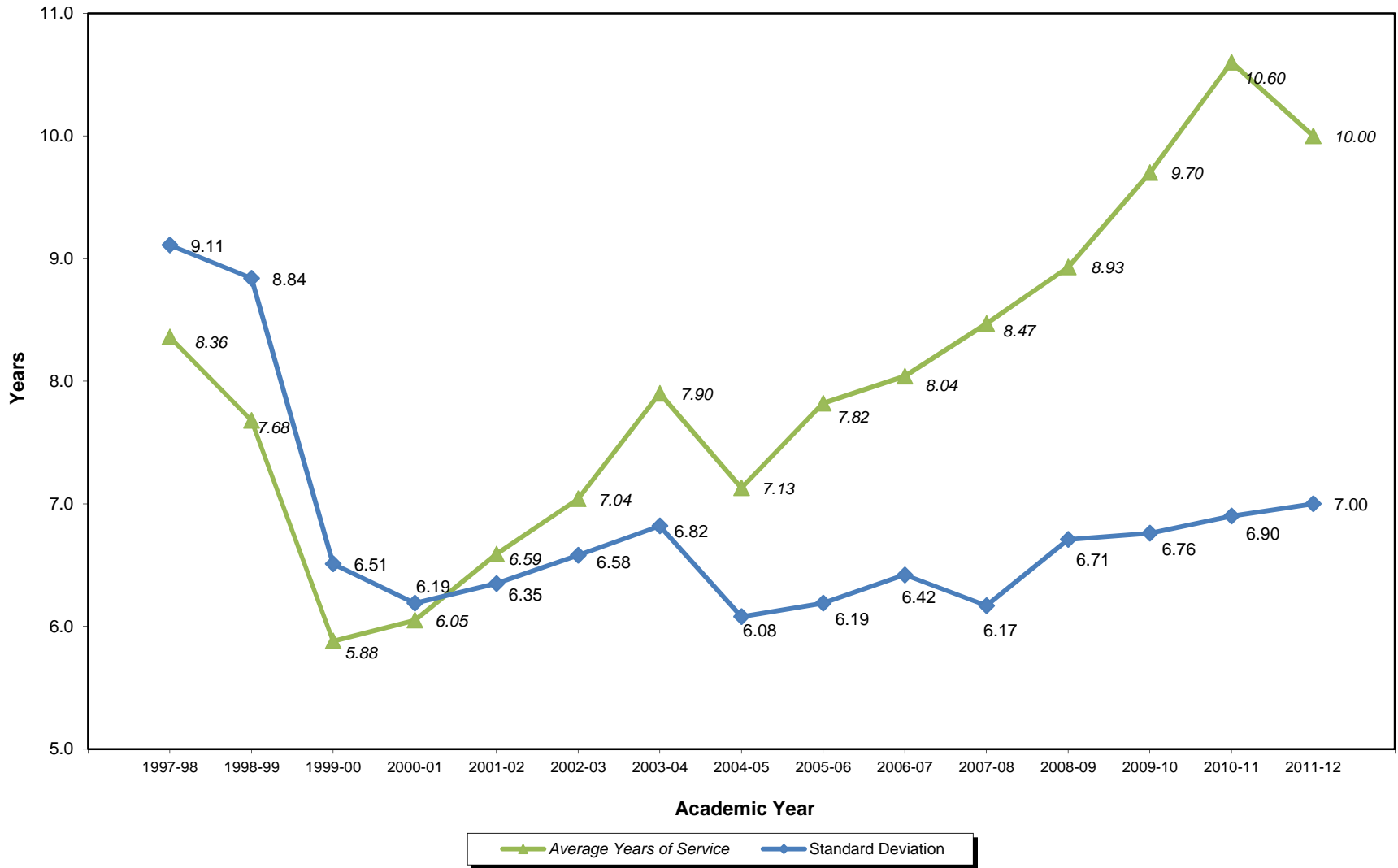
** Other terminal degree (i.e., J.D., M.Div., M.F.A.)

FULL-TIME FACULTY* BY RANK, GENDER, AND ETHNICITY

ACADEMIC YEAR	2002-03	2003-04	2004-05	2005-06	2006-07	2007-08	2008-09	2009-10	2010-11**	2011-12**
# OF FACULTY	103	100	106	106	111	111	113	115	112	111
Number of:										
Professors	23	24	23	26	26	30	38	40	43	46
Associate Professors	31	34	39	40	40	37	30	38	32	26
Assistant Professors	34	29	29	25	25	25	31	23	25	25
Instructors	7	8	14	15	20	18	13	13	11	13
Lecturers	8	5	1	0	0	1	1	1	1	1
Percentage of Total:										
Professors	22.3%	24.0%	21.7%	24.5%	23.5%	27.0%	33.6%	34.8%	38.4%	41.4%
Associate Professors	30.1%	34.0%	36.8%	37.7%	36.0%	33.3%	26.5%	33.0%	28.6%	23.4%
Assistant Professors	33.0%	29.0%	27.4%	23.6%	22.5%	22.5%	27.4%	20.0%	22.3%	22.5%
Instructors	6.8%	8.0%	13.2%	14.2%	18.0%	16.2%	11.5%	11.3%	9.8%	11.7%
Lecturers	7.8%	5.0%	0.9%	0.0%	0.0%	0.9%	0.9%	0.9%	0.9%	0.9%
Number of:										
Women	43	42	46	45	49	52	56	57	55	56
Men	60	58	60	61	62	59	57	58	57	55
Percentage of Total:										
Women	41.7%	42.0%	43.4%	42.5%	44.1%	46.8%	49.6%	49.6%	49.1%	50.5%
Men	58.3%	58.0%	56.6%	57.5%	55.9%	53.2%	50.4%	50.4%	50.9%	49.5%
Number of:										
Causasian	98	95	100	100	106	105	108	110	107	105
Minority + Internat'l	5	5	6	6	5	6	5	5	5	6
Percentage of Total:										
Causasian	95.1%	95.0%	94.3%	94.3%	95.5%	94.6%	95.6%	95.7%	95.5%	94.6%
Minority + Internat'l	4.9%	5.0%	5.7%	5.7%	4.5%	5.4%	4.4%	4.3%	4.5%	5.4%

* Includes faculty on leave or sabbatical, but not administrators with faculty status.

Average Faculty Years of Service



MEAN ACADEMIC FACULTY SALARIES BY RANK
(Base Salaries)

YEAR	PROFESSOR	ASSOCIATE PROFESSOR	ASSISTANT PROFESSOR	INSTRUCTOR	LECTURER
1998-99	49,222	40,730	35,112	31,582	26,603
1999-00	50,222	42,024	36,190	33,393	27,548
2000-01	51,493	43,708	38,261	31,570	29,233
2001-02	52,479	44,975	39,083	33,884	29,749
2002-03	53,785	45,477	40,097	34,807	29,856
2003-04	56,145	47,478	42,449	35,876	32,048
2004-05	58,233	49,266	42,617	36,425	NA
2005-06	60,390	51,391	44,460	38,391	NA
2006-07	62,881	53,398	46,949	39,905	NA
2007-08	64,187	55,619	47,671	40,086	NA
2008-09	66,487	56,874	47,868	42,032	NA
2009-10	66,636	55,760	48,287	41,792	NA
2010-11*	66,878	56,999	48,545	42,970	NA
2011-12	65,585	57,035	46,646	41,936	NA

MEDIAN ACADEMIC FACULTY SALARIES BY RANK
(Base Salaries)

YEAR	PROFESSOR	ASSOCIATE PROFESSOR	ASSISTANT PROFESSOR	INSTRUCTOR	LECTURER
1998-99	48,695	40,830	35,265	31,240	26,285
1999-00	49,280	41,830	35,830	32,380	27,460
2000-01	51,500	43,820	37,540	31,570	28,570
2001-02	51,050	45,140	38,430	33,500	29,440
2002-03	52,070	44,010	39,460	34,670	29,305
2003-04	54,670	46,200	41,440	35,890	31,020
2004-05	57,130	48,290	42,180	36,970	NA
2005-06	59,560	50,050	44,555	38,540	NA
2006-07	62,235	51,945	46,780	40,465	NA
2007-08	62,835	54,340	48,020	41,780	NA
2008-09	65,400	54,930	47,360	43,770	NA
2009-10	65,400	54,930	47,360	43,770	NA
2010-11*	66,370	56,360	48,300	44,650	NA
2011-12	65,030	56,360	46,290	42,110	NA

* reflects October 2010 raise

Section III

Academic Data

UNDERGRADUATE ENROLLMENT by MAJOR
Fall 2011

NOTE: +# indicates degreed students pursuing licensure via MT3.

School	Department	Major	Major Sub-totals	Total by Department	Total by College/School
College of Theology, Arts, and Sciences					807
	Communication Arts		86	86	
	History, Philosophy, and Social Sciences			51	
		<i>History</i>	15		
		<i>Integrated Social Studies</i>	8+6		
		<i>Philosophy</i>	3		
		<i>Political Science</i>	19		
	Language and Literature			56	
		<i>English</i>	22		
		<i>Integrated Language Arts</i>	16+1		
		<i>Spanish</i>	6		
		<i>Spanish Education</i>	10+1		
	Liberal Arts/Individualized Major		10	10	
	Mathematics and Computer Science			49	
		<i>Computer Science</i>	24		
		<i>Mathematics</i>	24+1		
	Music			74	
		<i>Music</i>	3		
		<i>Music Education</i>	31		
		<i>Music Ministry</i>	10		
		<i>Music Production</i>	30		
	Natural Sciences			223	
		<i>Biology</i>	43+1		
		<i>Biology - Clinical Lab Sci.</i>	2		
		<i>Chemistry</i>	17		
		<i>Exercise Science</i>	91		
		<i>Integrated Science</i>	4		
		<i>Life Science/Chemistry Education</i>	4		
		<i>Physical Science</i>	2		
		<i>Zoo and Wildlife Biology</i>	59		
	Psychology		62	62	
	Social Work		54	54	
	Theology			107	
		<i>Bible and Theology</i>	53		
		<i>Educational Ministries</i>	4		
		<i>Sports Outreach Ministries</i>	3		
		<i>Youth Ministry</i>	29		
		<i>Sports/Educational Ministries</i>	3		
		<i>Youth/Educational Ministries</i>	10		
		<i>Youth/Sports Ministries</i>	5		
	Visual Arts			35	
		<i>Art</i>	26		
		<i>Visual Arts Education</i>	5+4		
School of Business and Leadership					483
	Business			205	
		<i>Accounting</i>	37		
		<i>Business Administration</i>	123		
		<i>Sport Management</i>	45		
	Management Studies			278	
		<i>Management</i>	278		
School of Education and Human Development					241
	Education			241	
		<i>Early Childhood Education</i>	87+1		
		<i>Intervention Specialist</i>	70+12		
		<i>Middle Childhood Education</i>	53+1		
		<i>Physical Education (BS)</i>	17		
School of Nursing and Health Sciences					312
		<i>Traditional Nursing (BSN)</i>	266		
		<i>Degree-Completion Nursing (BSNDC)</i>	25		
		<i>Community Health Education</i>	16		
		<i>Health Education</i>	4+1		
Undecided/Other					80

MAJOR FIELD ANALYSIS BY FALL ENROLLMENT: 10-YEAR HISTORY

NOTE: Beginning 2009, +# indicates degreed students pursuing licensure via MT3.

COLLEGE/SCHOOL/DEPARTMENT/MAJOR	2002	2003	2004	2005	2006	2007	2008	2009	2010	2011
College of Theology, Arts, and Sciences										
Department of Communication Arts	113	102	93	98	87	95	97	83	82	86
Dept of History, Philosophy, & Social Sciences	<u>78</u>	<u>88</u>	<u>57</u>	<u>63</u>	<u>55</u>	<u>50</u>	<u>60</u>	<u>56</u>	<u>59</u>	<u>51</u>
History	19	25	13	26	18	13	14	12	12	15
Integrated Social Studies	35	44	34	23	21	16	23	19+2	16+6	8+6
Interdisciplinary Social Science	2	---	---	---	---	---	---	---	---	---
International Affairs	2	---	---	---	---	---	---	---	---	---
Law and Society	7	---	---	---	---	---	---	---	---	---
Philosophy	---	2	2	4	4	2	5	4	5	3
Political Science	13	17	8	10	12	19	18	19	20	19
Department of Language and Literature	<u>58</u>	<u>45</u>	<u>50</u>	<u>54</u>	<u>45</u>	<u>52</u>	<u>67</u>	<u>68</u>	<u>68</u>	<u>56</u>
English	15	11	19	19	18	23	30	29	26	22
Integrated Language Arts	28	24	24	27	19	22	24	23+3	21+5	16+1
Spanish (BA)	9	5	3	3	3	1	5	6	7	6
Spanish Education (BS)	6	5	4	5	5	6	8	7	8+1	10+1
Dept of Mathematics and Computer Science	<u>51</u>	<u>47</u>	<u>51</u>	<u>40</u>	<u>43</u>	<u>52</u>	<u>40</u>	<u>46</u>	<u>40</u>	<u>49</u>
Computer Science	29	28	26	22	21	26	19	20	20	24
Mathematics	22	19	25	18	22	26	21	24+2	19+1	24+1
Department of Music	<u>69</u>	<u>54</u>	<u>57</u>	<u>60</u>	<u>57</u>	<u>60</u>	<u>62</u>	<u>82</u>	<u>79</u>	<u>74</u>
Music (BA)	9	7	8	7	5	9	7	7	12	3
Music Education (BS)	33	19	12	15	13	19	28	33	26	31
Music Ministry (BA)	---	---	3	9	7	8	6	12	11	10
Music Production/Comm Mus Technology (BA)	27	28	34	29	32	24	21	30	30	30
Department of Natural Sciences	<u>62</u>	<u>62</u>	<u>70</u>	<u>91</u>	<u>97</u>	<u>123</u>	<u>142</u>	<u>175</u>	<u>175</u>	<u>223</u>
Biology	38	39	39	43	31	48	46	59+1	35	43+1
Chemistry	6	4	3	9	8	5	11	6	14	17
Clinical Laboratory Science	0	1	4	3	3	0	0	3	5	2
Exercise Science	13	12	17	25	26	30	46	56	73	91
Integrated Science	4	5	4	4	3	2	1	2	3	4
Life Science/Chemistry Education	---	---	1	1	4	1	3	4	2	4
Physical Science	1	1	2	0	1	1	0	0+1	0	2
Zoo and Wildlife Biology	---	---	---	6	21	36	35	43	43	59
Department of Psychology	47	43	47	49	49	61	61	67	60	62
Department of Social Work	41	40	57	55	67	59	61	55	45	54
Department of Theology	<u>103</u>	<u>130</u>	<u>120</u>	<u>130</u>	<u>129</u>	<u>120</u>	<u>125</u>	<u>121</u>	<u>112</u>	<u>107</u>
Bible and Theology	44	54	53	45	46	42	48	51	54	53
Educational Ministries	11	11	5	4	8	8	8	7	4	4
Sports Outreach Ministries	8	11	6	6	9	6	4	3	1	3
Youth Ministry	40	37	31	50	44	40	41	33	29	29
Sports/Educational Ministries	---	---	2	1	0	0	0	2	3	3
Youth/Educational Ministries	---	8	11	12	6	7	10	15	12	10
Youth/Sports Ministries	---	9	12	12	16	17	14	10	9	5
Department of Visual Arts	<u>28</u>	<u>37</u>	<u>38</u>	<u>37</u>	<u>36</u>	<u>35</u>	<u>36</u>	<u>44</u>	<u>36</u>	<u>35</u>
Art (BA)	11	17	15	16	18	20	27	32	29	26
Visual Arts Education (BS)	17	20	23	21	18	15	9	10+2	6+1	5+4
Liberal Arts or Individualized Major	25	27	22	25	31	26	14	11	9	10
School of Business and Leadership										
Department of Business	<u>182</u>	<u>172</u>	<u>173</u>	<u>174</u>	<u>192</u>	<u>189</u>	<u>215</u>	<u>237</u>	<u>218</u>	<u>205</u>
Accounting	30	25	24	29	29	36	32	43	42	37
Business Administration	136	119	119	113	123	115	142	142	125	123
Sport Management	16	28	30	32	40	38	41	52	51	45
Department of Management Studies (MMP)	305	262	286	275	310	309	309	358	330	278
School of Education and Human Development	<u>244</u>	<u>262</u>	<u>260</u>	<u>241</u>	<u>216</u>	<u>199</u>	<u>194</u>	<u>226</u>	<u>255</u>	<u>241</u>
Adult Fitness (BA)	5	9	8	13	12	14	5	2	---	---
Early Childhood Education	156	175	166	105	91	75	75	97+4	89+1	87+1
Elementary Education	4	1	---	---	---	---	---	---	---	---
Intervention Specialist Education	22	32	36	80	74	76	70	64+12	77+19	70+12
Middle Childhood Education	62	54	58	56	51	48	49	48+1	55+1	53+1
Outdoor Leadership (BA)	1	2	4	5	2	2	0	3	---	---
Physical Education (BA)	6	1	---	---	---	---	---	---	---	---
Physical Education (BS)	14	12	29	26	22	17	23	16	13	17
School of Nursing and Health Sciences	<u>184</u>	<u>205</u>	<u>264</u>	<u>313</u>	<u>333</u>	<u>385</u>	<u>367</u>	<u>367</u>	<u>356</u>	<u>312</u>
Traditional Nursing (BSN)	125	151	195	231	246	306	295	307	304	266
Degree-Completion Nursing (BSNDC)	46	39	50	55	54	51	45	38	24	25
Community Health Educ (BA)	8	10	14	23	30	25	24	16	24	16
Health Education (BS)	5	5	5	4	3	3	3	4+2	3+1	4+1
Undecided/Other	172	291	233	171	116	144	102	131	160	80

TOTAL STUDENT HOURS BY SCHOOL/Department: 5-YEAR TREND

	FALL					SPRING					TOTAL YEAR					5-yr %
	06-07	07-08	08-09	09-10	10-11	06-07	07-08	08-09	09-10	10-11	06-07	07-08	08-09	09-10	10-11	
THEOLOGY, ARTS, AND SCIENCES																
Comm Arts	1451	1587	1603	1874	1867	1383	1520	1366	1640	1472	2834	3107	2969	3514	3339	17.8%
Hist, PH, SS	2376	2470	2411	2447	2464	2297	2128	2172	2520	2269	4673	4598	4583	4967	4733	1.3%
Lang & Lit	2247.5	2402	2540	2817	2387	2073	2214	2392	2265	2144	4320.5	4616	4932	5082	4531	4.9%
Math & Cpsc	936	1192	1082	1219	1220	948	987	992	1085	1125	1884	2179	2074	2304	2345	24.5%
Music	550	620	708	782	801.5	576	586.5	830.5	713	792.5	1126	1206.5	1538.5	1495	1594	41.6%
Nat Sciences	1859	1848	1900	2246	2403	1463	1661	1832	1997	2329	3322	3509	3732	4243	4732	42.4%
Psychology	1264	1355	1343	1395	1174	1082	1138	1052	1169	1227	2346	2493	2395	2564	2401	2.3%
Social Work	353	267	342	337	315	382	432	514	378	413	735	699	856	715	728	-1.0%
Theology	2821	3011	2957	2576	2507	2969	2995	2380	2845	2344	5790	6006	5337	5421	4851	-16.2%
Visual Arts	687	640	631	641	690	781	689	834	760	779	1468	1329	1465	1401	1469	0.1%
TOTAL											28498.5	29742.5	29881.5	31706	30723	7.8%
BUSINESS AND LEADERSHIP																
Business	1745	1684	1650	1731	1851	1716	1578	1626	1635	1763	3461	3262	3276	3366	3614	4.4%
EDUCATION AND HUMAN DEVELOPMENT																
Education	2388	2178	1735	2152	2976	2184	2099	1878	2315	3050	4572	4277	3613	4467	6026	31.8%
Health & HP*	1712	1570	1722.5	1577.5	NA	1407.5	1584	1364.5	1334	NA	3119.5	3154	3087	2911.5	NA	NA
TOTAL											7691.5	7431	6700	7378.5	6026	-21.7%
NURSING AND HEALTH SCIENCES																
Nursing	1874	2030	1999	1948	2077	1779	2122	2068	2013	2161	3653	4152	4067	3961	4238	16.0%
Health Sciences					459					435					894	NA
TOTAL															5132	NA
GRADUATE**																
Business	326	450	782	808	647	400	653	772	824	580	726	1103	1554	1632	1227	69.0%
Counseling	661	672	804	855	935	600	729	753	795	904	1261	1401	1557	1650	1839	45.8%
Education	569	428	374	382	279	541	601	417	361	371	1110	1029	791	743	650	-41.4%
Nursing	292	265	344	328	406	416	360	378	434	510	708	625	722	762	916	29.4%
Organiz Leadership					304					406					710	NA
Theological Studies	306	288	246	273	279	237	175	187	168	192	543	463	433	441	471	-13.3%
TOTAL											4348	4621	5057	5228	5813	33.7%
CCCU/BCA/ROM																
Pittsburgh Sem.	0	60	15	0	0	0	0	0	0	0	0	60	15	0	0	NA
Guatemala	0	0	0	0	0	85	41	0	0	0	85	41	0	0	0	NA
GEN 100/101/150	442	485	476	562	466	40	26	26	30	28	482	511	502	592	494	2.5%
GEN 460			222	285	462		114	297	213	492	0	114	519	498	954	NA
Distance Learning	433	302	416	526	652	625	627	742	884	883	1058	929	1158	1410	1535	45.1%
Dual Enrollment			180	57				185	105				365	162		NA
Honor Sem/Theses	5	32	30	26	37	24	8	12	19	23	29	40	42	45	60	106.9%

Total= 49552 51067 51862 54573 54568 10.1%
Trad. U.G. FTE= 3013 3108 3143 3295 3254 8.0%

* Beginning in 2010-11, HHP hours will be allocated to the departments of Business, Education, and Natural Sciences; and to the School of Nursing and Health Sciences.

** Graduate Workshop hours are not included.

SUMMER SCHOOL STUDENT HOURS BY SCHOOL/Department: 3-YEAR TREND

	2008-09				2009-10				2010-11				2-yr %
	SSIII08	SSI09	SSII09	TOTAL	SSIII09	SSI10	SSII10	TOTAL	SSIII10	SSI11	SSII11	TOTAL	
THEOLOGY, ARTS, AND SCIENCES													
Comm Arts	0	15	1	16	0	12	9	21	0	21	0	21	31.3%
Hist, PH, SS	16	60	21	97	14	69	33	116	0	66	0	66	-32.0%
Lang & Lit	0	71	24	95	6	48	4	58	0	0	42	42	-55.8%
Math & Cpsc	0	87	30	117	0	48	15	63	0	54	0	54	-53.8%
Music	0	3	0	3	0	6	0	6	0	5	0	5	66.7%
Nat Sci	27	310	103	440	0	330	104	434	1	276	59	336	-23.6%
Psychology	0	6	0	6	0	18	3	21	0	12	0	12	100.0%
Social Work	0	44	0	44	0	92	0	92	4	36	0	40	-9.1%
Theology	3	70.5	15	88.5	3	47	24	74	0	49	36	85	-4.0%
Visual Arts	0	9	0	9	0	0	0	0	0	9	0	9	0.0%
TOTAL	46	675.5	194	915.5	23	670	192	885	5	528	137	670	-26.8%
BUSINESS AND LEADERSHIP													
Business	0	0	0	0	3	0	0	0	0	9	0	9	NA
EDUCATION AND HUMAN DEVELOPMENT													
Education	6	92	66	164	0	93	120	213	0	35	113	148	-9.8%
Health & HP*	19.5	30	45	94.5	10.5	29	21	60.5	29.5				NA
TOTAL	25.5	122	111	258.5	10.5	122	141	273.5	29.5	35	113	148	-42.7%
NURSING AND HEALTH SCIENCES													
Nursing	0	6	0	6	0	0	0	0	0	0	0	0	NA
Health Sciences*									0	6	0	6	NA
TOTAL	0	6	0	6	0	0	0	0	0	6	0	6	NA
GRADUATE													
Business	0	719	0	719	0	584	0	584	0	542	0	542	-24.6%
Counseling	0	456	0	456	0	570	0	570	0	570	0	570	25.0%
Education	0	108	147	255	0	147	161	308	0	157	76	233	-8.6%
Ed - Workshops	285	44	566	895	257	208	521	986	250	80	507	837	-6.5%
Leadership									0	338	0	338	NA
Nursing	0	364	0	364	0	435	0	435	0	500	0	500	37.4%
Theological Studies	0	75	0	75	3	33	0	36	0	72	0	72	-4.0%
TOTAL	285	1691	713	2689	260	1977	682	2919	250	2259	583	3092	15.0%
CCCU Programs													
AuSable	0	8	6	14	0	0	0	0	0	12	0	12	-14.3%
Distance Lrng (GEN)	6	0	0	6	0	0	0	0	0	0	0	0	NA
Gen Ed (GEN 460)	416	504	558	1478	352	697	417	1466	381	670	483	1534	3.8%
	0	39	0	39	0	30	36	66	0	0	39	39	NA
GRAND TOTAL	778.5	3045.5	1582.0	5406.0	648.5	3496.0	1468.0	5609.5	665.5	3519.0	1355.0	5510.0	1.9%

1) Graduate Education Workshop hours are reported separately from regular Graduate Education hours.

2) The hours are reported on a fiscal year calendar; hence the inclusion of a Summer III session followed by Summer I and II of the next summer.

krw071811

3) Nursing hours include only traditional BSN hours; no degree-completion nursing or school nurse licensure hours.

4) Full-semester summer hours are counted in SSI.

* Beginning in Fall 2010, Health & HP hours allocated to the Departments of Business, Education, and Natural Sciences; and to the School of Nursing and Health Sciences.

UNDERGRADUATE SUMMER SCHOOL STATISTICS

(Traditional Programs)

	<u>2006</u>	<u>2007</u>	<u>2008</u>	<u>2009</u>	<u>2010</u>	<u>2011</u>
ENROLLMENT IN SUMMER SESSIONS						
First Five-week Session	250	232	292	311	313	241
Second Five-week Session	206	218	210	212	178	157
Third Four-week Session	<u>147</u>	<u>161</u>	<u>144</u>	<u>106</u>	85	89
Full Fourteen-week Session					<u>41</u>	<u>44</u>
Total Enrollment	<u>603</u>	<u>611</u>	<u>646</u>	<u>629</u>	<u>617</u>	<u>531</u>
HOURS ENROLLED BY SESSION						
First Five-week Session	943.0	902.5	1118.5	1255.0	1285.0	947.0
Second Five-week Session	780.0	754.0	832.0	835.0	684.0	614.0
Third Four-week Session	<u>460.5</u>	<u>589.0</u>	<u>510.5</u>	<u>410.5</u>	282.5	309.5
Full Fourteen-week Session					<u>172.0</u>	<u>148</u>
Total Semester Hours	<u>2183.5</u>	<u>2245.5</u>	<u>2461</u>	<u>2500.5</u>	<u>2423.5</u>	<u>2018.5</u>
CLASSIFICATION OF SUMMER SCHOOL STUDENTS						
1) Fall and Spring enrollees returning for summer school						
Freshmen	91	105	76	37	50	30
Sophomores	122	140	139	94	74	73
Juniors	161	176	138	104	123	109
Seniors	167	119	220	186	158	150
Special	<u>27</u>	<u>34</u>	<u>23</u>	<u>47</u>	<u>18</u>	16
Total	<u>568</u>	<u>574</u>	<u>596</u>	<u>468</u>	<u>423</u>	<u>378</u>
2) New admissions for summer school						
Regular Admission	4	4	4	18	15	32
Conditional Admission	0	0	0	0	0	0
Academic Probation	0	0	0	0	0	0
Special Admission	21	12	37	13	7	28
Transient	<u>0</u>	<u>10</u>	<u>0</u>	<u>18</u>	<u>9</u>	7
Total	<u>25</u>	<u>26</u>	<u>41</u>	<u>49</u>	<u>31</u>	<u>67</u>
3) Readmitted students - Not enrolled Fall or Spring						
Total	<u>10</u>	<u>11</u>	<u>9</u>	<u>10</u>	<u>5</u>	<u>10</u>
TOTAL STUDENTS ENROLLED						
One Session ONLY	328	358	372	341	373	344
Two Sessions or more	163	173	179	186	189	187
Three Sessions or more	41	45	44	28	37	50
All Four Sessions (I, II, III, Summer Semester)	<u>0</u>	2	2	3	1	4
Total Unduplicated Summer Headcount	<u>492</u>	<u>531</u>	<u>551</u>	<u>527</u>	<u>562</u>	<u>532</u>

COMPREHENSIVE SUMMARY OF ENROLLMENTS

(Fall Semester through Summer III)

	<u>2005-06</u>	<u>2006-07</u>	<u>2007-08</u>	<u>2008-09</u>	<u>2009-10</u>	<u>2010-11</u>
Traditional undergraduate	1788	1794	1849	1853	2040	1883
Degree-completion undergraduate	<u>481</u>	<u>468</u>	<u>486</u>	<u>522</u>	<u>495</u>	<u>480</u>
Total Undergraduate Students served	2269	2262	2335	2375	2535	2363
Total Graduate Students served	733	898	968	1150	1178	1076
TOTAL INDIVIDUALS SERVED	<u>3002</u>	<u>3160</u>	<u>3303</u>	<u>3525</u>	<u>3713</u>	<u>3439</u>

MALONE UNIVERSITY LIBRARY
HOLDINGS, EXPENDITURES, AND CIRCULATION

	2001-02	2002-03	2003-04	2004-05	2005-06	2006-07	2007-08	2008-09	2009-10	2010-11
Total Hardcopy Volumes	158,974	161,899	165,933	169,655	173,231	175,830	178,992	177,505	179,033	177,289
E-Books										55,327
Govt. Document Hardcopy Volumes	74,981	74,852	72,897	72,299	72,889	72,107	72,260	70,024	69,031	39,698
Total Audiovisual/Microform Items	610,028	629,566	664,887	686,992	698,109	695,720	712,712	706,763	712,058	697,122
Total Items	843,983	866,317	903,717	928,946	944,229	943,657	963,964	954,292	960,122	969,436
Total Library Circulation	38,189	38,314	41,967	39,411	34,227	35,266	34,267	28,966	28,436	28,663
Interlibrary Loans										
Borrowed Items	3,036	3,354	4,172	4,984	5,053	6,560	4,858	4,401	4,626	4,716
Loaned Items	5,724	5,600	6,243	6,353	10,291	5,627	6,560	6,176	5,382	7,141
Total Library Expenditures	\$783,757	\$811,969	\$857,692	\$858,638	\$875,326	\$926,933	\$947,556	\$844,638	\$782,715	\$720,379
Library Expenditures as % of Total Institutional E & G	3.759%	3.831%	3.900%	3.637%	3.491%	3.456%	3.295%	2.712%	2.470%	2.320%
Total Institutional E&G Exp.	\$20,848,273	\$21,192,891	\$21,994,216	\$23,610,082	\$25,074,482	\$26,823,460	\$28,757,223	\$31,140,016	\$31,691,300	\$31,033,190

Section IV

Retention and Graduation Data

LONGITUDINAL RETENTION AND GRADUATION RATES

FALL OF ENTRY	NEW FT FRESHMEN	RETENTION			GRADUATION*			
		ENROLLED 2nd Fall	ENROLLED 3rd Fall	ENROLLED 4th Fall	GRADUATED w/in 4 years	GRADUATED w/in 5 years	GRADUATED w/in 6 years	GRADUATED in > 6 years
1993	428	280 65.4%	233 54.4%	208 48.6%	112 26.2%	182 42.5%	195 45.6%	202 47.2%
1994	417	267 64.0%	219 52.5%	206 49.4%	130 31.2%	185 44.4%	198 47.5%	204 48.9%
1995	408	274 67.2%	226 55.4%	206 50.5%	134 32.8%	188 46.1%	199 48.8%	202 49.5%
1996	400	268 67.0%	232 58.0%	205 51.3%	141 35.3%	195 48.8%	200 50.0%	209 52.3%
1997	464	345 74.4%	304 65.5%	284 61.2%	208 44.8%	268 57.8%	275 59.3%	285 61.4%
1998	397	295 74.3%	243 61.2%	217 54.7%	152 38.3%	208 52.4%	219 55.2%	224 56.4%
1999	405	286 70.6%	254 62.7%	237 58.5%	159 39.3%	224 55.3%	230 56.8%	237 58.5%
2000	388	287 74.0%	231 59.5%	218 56.2%	157 40.5%	204 52.6%	206 53.1%	213 54.9%
2001	355	250 70.4%	220 62.0%	212 59.7%	144 40.6%	192 54.1%	200 56.3%	204 57.5%
2002	348	262 75.3%	220 63.2%	202 58.0%	148 42.5%	190 54.6%	195 56.0%	200 57.5%
2003	389	293 75.3%	254 65.3%	236 60.7%	173 44.5%	233 59.9%	237 60.9%	239 61.4%
2004	400	300 75.0%	253 63.3%	241 60.3%	181 45.3%	225 56.3%	232 58.0%	234 58.5%
2005	357	263 73.7%	225 63.0%	220 61.6%	165 46.2%	203 56.9%	208 58.3%	
2006	341	267 78.3%	239 70.1%	219 64.2%	159 46.6%	203 59.5%		
2007	387	290 74.9%	259 66.9%	240 62.0%	176 45.5%			
2008	389	273 70.2%	223 57.3%	207 53.2%	4** 1.0%			
2009	477	338 70.9%	294 61.6%					
2010	375	267 71.2%						
2011	359							

*Graduation - includes 2-year and 4-year degrees. Note - A.A. program was discontinued effective 1998-99.

**Students who have completed baccalaureate degrees in 3 years or less

MAJOR FIELD ANALYSIS

2011 Graduates per Major
Undergraduate Students Only

MAJORS	DEC '10 & APRIL '11 GRADS	AUG '11 GRADS	TOTAL
Accounting	12	0	12
Art	9	0	9
Bible & Theology	8	3	11
Biology	7	0	7
Biology - Clinical Laboratory Science	0	0	0
Business Administration	35	1	36
Chemistry	0	0	0
Commercial Music Tech/Music Production	5	2	7
Communications Arts	22	1	23
Community Health Education	9	2	11
Computer Science	2	0	2
Early Childhood Education	26	1	27
Educational Ministries	2	0	2
English	13	0	13
Exercise Science	15	1	16
Health Education	1	0	1
History	2	3	5
Individualized Major	1	0	1
Integrated Language Arts	4	0	4
Integrated Science	0	0	0
Integrated Social Studies	3	0	3
Intervention Specialist Education	14	0	14
Liberal Arts	2	0	2
Management (MMP)	110	48	158
Mathematics	3	0	3
Middle Childhood Education	8	0	8
Music	0	0	0
Music Education	4	0	4
Music Ministry	0	1	1
Nursing - Degree-Completion Program BSN	12	4	16
Nursing - Traditional Basic Program BSN	56	0	56
Philosophy	2	0	2
Physical Education	2	0	2
Political Science	5	0	5
Psychology	11	2	13
Social Work	6	2	8
Spanish	3	1	4
Spanish Education	1	0	1
Sport Management	8	3	11
Sports Outreach Ministries	1	0	1
Sports/Educational Ministries	0	0	0
Visual Arts Education	0	0	0
Youth Ministry	4	4	8
Youth/Educational Ministries	2	1	3
Youth/Sports Ministries	3	0	3
Zoo and Wildlife Biology	2	0	2
Total Majors Completed in 2009-10	435	80	515

NOTE: Double majors are counted in both major fields.

MAJOR FIELD ANALYSIS BY NUMBER OF GRADUATES: 10-YEAR HISTORY

COLLEGE/SCHOOL/DEPT/MAJOR	2002	2003	2004	2005	2006	2007	2008	2009	2010	2011
College of Theology, Arts, and Sciences: Communication Arts										
Communication Arts	26	27	34	22	22	21	20	23	24	23
Communication Comprehensive	1	---	---	---	---	---	---	---	---	---
College of Theology, Arts, and Sciences: History, Philosophy, and Social Sciences										
History	6	2	4	6	5	6	6	5	4	5
Interdisciplinary Social Science	3	---	---	---	---	---	---	---	---	---
Integrated Social Studies	1	8	11	10	7	3	4	1	1	3
International Affairs	1	1	---	---	---	---	---	---	---	---
Law and Society	2	---	---	---	---	---	---	---	---	---
Philosophy	---	---	---	---	---	---	---	1	2	2
Political Science	3	3	4	5	3	2	6	5	6	5
Social Studies Comprehensive	7	---	---	---	---	---	---	---	---	---
College of Theology, Arts, and Sciences: Language and Literature										
English	3	8	4	6	6	4	8	10	6	13
Integrated Language Arts	2	7	9	2	5	6	5	3	5	4
Spanish	0	2	3	1	1	2	3	4	0	4
Spanish Education	1	1	3	0	2	2	0	0	0	1
College of Theology, Arts, and Sciences: Mathematics and Computer Science										
Computer Science	11	5	5	4	3	5	10	6	5	2
Mathematics	6	8	4	5	3	5	7	9	4	3
College of Theology, Arts, and Sciences: Music										
Music (BA)	0	0	1	2	1	2	0	0	0	0
Music Education (BS)	3	7	4	5	2	0	2	0	5	4
Music Ministry (BA)	---	---	---	---	1	0	1	0	1	1
Music Production (BA) (CMUS)	1	2	7	3	2	4	7	1	4	7
College of Theology, Arts, and Sciences: Natural Sciences										
Biology	9	4	7	6	7	3	5	6	11	7
Chemistry	1	1	3	1	1	3	1	1	0	0
Clinical Laboratory Science	1	0	0	0	0	1	2	0	1	0
Exercise Science	7	3	1	0	3	4	3	6	7	16
Integrated Science	---	---	2	1	0	0	1	0	0	0
Zoo and Wildlife Biology	---	---	---	---	1	1	2	1	6	2
College of Theology, Arts, and Sciences: Psychology										
Psychology	12	15	15	10	8	8	14	13	17	13
College of Theology, Arts, and Sciences: Social Work										
Social Work	4	7	5	12	8	17	13	18	17	8
College of Theology, Arts, and Sciences: Theology										
Bible and Theology	10	9	16	8	15	13	9	14	15	11
Diversified Ministries	0	1	---	---	---	---	---	---	---	---
Educational Ministries	1	2	1	1	3	1	1	1	2	2
Sports Outreach Ministries	4	2	1	0	0	2	0	1	0	1
Sports/Educational Ministries	---	---	---	1	1	0	0	0	0	0
Youth Ministry	3	7	6	5	8	7	8	13	5	8
Youth/Educational Ministries	---	1	4	1	6	2	0	3	2	3
Youth/Sports Ministries	---	0	0	0	2	3	7	3	5	3
College of Theology, Arts, and Sciences: Visual Arts										
Art (BA)	3	1	2	1	5	6	4	4	7	9
Art/Visual Arts Education (BS)	0	2	2	6	3	2	4	1	1	0
Individualized Major										
Liberal Arts	3	7	18	10	13	12	12	6	5	2
School of Business and Leadership: Business										
Accounting	8	9	8	6	5	9	10	8	10	12
Business Administration	43	41	38	31	36	24	36	36	34	36
Sport Management	1	0	3	10	10	9	7	6	5	11
School of Business and Leadership: Management Studies										
Management (MMP)	178	227	186	182	175	176	165	144	144	158
School of Education: Education										
Adult Fitness	2	2	1	2	3	3	5	3	1	---
Early Childhood Education (BS)	21	30	45	35	32	37	34	27	26	27
Elementary Education	23	3	---	---	---	---	---	---	---	---
Intervention Specialist	7	11	14	14	11	22	19	22	19	14
Middle Childhood Education	13	16	10	13	8	8	14	9	10	8
Outdoor Leadership (BA)	0	0	0	0	2	1	0	0	2	---
Physical Education (BA)	2	---	---	---	---	---	---	---	---	---
Physical Education (BS)	0	6	2	5	5	1	2	5	4	2
School of Nursing and Health Sciences										
Degree-Completion	26	30	23	28	38	31	29	22	25	16
Traditional (inc. LPN to BSN)	22	27	21	25	37	34	61	64	49	56
Community Health Educ (BA)	3	5	7	4	7	9	11	13	4	11
Health Education (BS)	1	0	1	0	1	2	0	2	4	1

Number per year includes Dec., May, and Aug. grads: ex. - 2011 includes Dec. 2010, May 2011, and Aug. 2011.

Graduates with double majors are counted in each discipline.

PROGRAM AREA ANALYSIS BY # OF MASTER'S GRADUATES: 10-YR HISTORY

GRADUATES BY PROGRAM AREA	2002	2003	2004	2005	2006	2007	2008	2009	2010	2011
Business										
MBA	44	37	27	20	25	19	17	40	61	38
Counseling and Human Development										
Classroom Guidance	-	-	-	-	-	-	-	-	2	1
Crstrm-Based Coun & Advocacy	-	-	-	-	-	-	-	-	-	3
Clinical Counseling	-	-	-	-	-	-	-	3	17	11
Community Counseling	1	8	8	5	8	18	6	11	3	-
School Counseling	10	6	8	13	15	15	11	19	15	12
Education										
Curriculum and Instruction	5	2	6	4	22	26	6	5	3	3
Curr, Instr and Professional Dev	3	6	2	2	1	4	1	3	4	0
Early Childhood Education	1	disc.*								
Instructional Technology	4	5	2	3	2	6	2	2	-	-
Intervention Specialist	4	4	10	14	7	14	9	14	16	6
Reading	2	2	2	3	3	6	6	4	1	2
Nursing										
Clinical Nurse Specialist			5	10	1	0	6	2	2	2
Family Nurse Practitioner			7	5	13	19	14	13	20	19
Theological Studies										
Christian Ldrshp in Sports Min	-	-	-	-	-	1	0	1	1	1
Christian Ministries	7	6	7	13	10	8	12	5	4	8
Family & Youth Ministries	0	0	1	1	0	0	-	-	-	-
Leadership in the Chr. Church	1	1	2	1	0	3	2	3	-	-
Pastoral Counseling	0	4	2	0	1	-	-	-	-	-
Theological Studies	-	-	-	-	-	-	-	-	-	2
Totals	82	81	89	94	108	139	92	125	149	108

Number per year includes December, May, and August grads: ex. - 2011 includes Dec 2010, May 2011, and Aug 2011. Graduates with double majors are counted in each discipline.

* disc. = Discontinued

MALONE UNIVERSITY

Class of 2010

Traditional Undergraduate Alumni Status Report – Summary

General Information

	311	Bachelor's degrees
	37	Double majors awarded
80.7%	251	Responding to the survey

Information Regarding All Traditional Undergraduates Responding to Survey

56.6%	142	Full-time employed in field related to major
9.6%	24	Full-time employed in field outside of major
66.1%	166	Total employed full-time
8.8%	22	Part-time employed in field related to major
14.7%	37	Pursuing graduate or professional degree FT within one year
.4%	1	Pursuing graduate or professional degree PT within one year
33.9%	85	Pursuing graduate or professional degree within 2-3 years
3.2%	8	Pursuing another BA/BS
5.6%	14	Still seeking full-time employment
1.6%	4	Not seeking employment or further education
85.7%	215	Satisfactorily Occupied *

* Satisfactorily occupied is defined as those who are employed full-time in a field related to their major, employed full-time in a field outside of their major, employed full-time in the military, employed part-time in their field by choice, continuing education (FT), or not seeking employment.

These statistics have been collected from all traditional undergraduate programs.

A separate report has been prepared for the degree-completion programs, i.e. Management and Nursing.

*Prepared by the Career Development Center
August 2011*

Traditional Undergraduate Alumni Status Report - Class of 2010

Employment and Graduate School Information as of August 2011

Major or Double Major (+)	# of Grads	# of Responses	FT/ In	FT/ Out	PT/ In	Seeking	Not Seeking	Another BA/BS or Cert	Grad Sch FT w/in 1 yr	Grad Sch PT w/in 1 yr	Grad Sch w/in 2-3 yrs
Accounting	1	1							1		
Accounting, Bus Admin	9	7	4	1				1	1	1	
Adult Fitness	1	1	1								
Art	8	8	1	2	1	2		1	1		
Bible & Theology	15	11	5	1	1			1	3		6
Bible & Theo, Youth Ministry	1	1	1								1
Biology	8	8	1	1	1				5		3
Business Administration	24	17	10	2		2			3		3
Bus Admin, Comm Arts	1	1							1		
Bus Admin, Computer Sci	1	1	1								
Bus Admin, Outdoor Leader	1	1	1								
Bus Admin, Political Science	1	0									
Commercial Music Tech	1	1		1							
Communication Arts	25	22	10	4	1	4			3		9
Comm Arts, Psychology	1	1							1		
Comm Arts, Youth Ministry	1	1	1								
Community Health Education	4	2	1	1							
Computer Science	3	3	1		2						
Early Childhood Education	7	6	5		1						4
Early Child, Interv Specialist	17	17	14	1	2						8
Educational Ministries	1	1	1								
English	7	6		1	1	1		1	2		1
Exercise Science	9	7	2		1				4		2
Health Education	1	1	1								
History	2	2		1				1			1
History, Philosophy	1	0									
Integrated Lang Arts	3	3	3								3
Intergrated Social Studies	3	3	2						1		1
Intervention Specialist	3	1	1								
Liberal Arts	4	4	3						1		
Mathematics	4	2	2								1
Middle Childhood Education	11	11	7	1	3						3
Music Education	6	6	5						1		4
Music Ministry	1	0									
Music Production	3	1							1		
Nursing	48	32	30		1	1					11
Outdoor Leadership	1	1				1					
Physical Education	1	1			1						1
Physical Educ, Health Educ	3	3		1	2						1
Political Science	4	3	1	1				1			2
Psychology	19	16	8	1	2				5		7
Social Work	17	12	5			2	2	1	2		6
Sport Management	8	4	1	2	1						1
Visual Arts Education	2	2	1					1			2
Youth Ministry	5	5	3	1			1				
Youth/Educational Ministries	2	2	2								1
Youth/Sports Ministries	5	5	4	1							
Zoo Biology	5	5	2		1	1			1		2
Zoo Biology, Biology	1	1	1								1
Zoo & Wildlife Biology	1	1					1				
TOTAL	311	251	142	24	22	14	4	8	37	1	85
Percentages		80.7	56.6	9.6	8.8	5.6	1.6	3.2	14.7	0.4	33.9

MALONE UNIVERSITY

Class of 2010

Degree Completion Alumni Status Report – Summary

General Information

	124	Management graduates
	7	Marketing Management graduates
	25	Organizational Management graduates
	2	Project Management graduates
	22	Nursing graduates
	180	Total all degree-completion graduates
65.6%	118	Number responding to the survey

Information Regarding All Responding to Survey

71.2%	84	Full-time employed in field related to major
15.3%	18	Full-time employed in field outside of major
86.4%	102	Total Employed Full-time
1.7%	2	Part-time employed in field of major (by choice)
3.3%	4	Part-time employed in field of major (still seeking FT)
8.5%	10	Pursuing graduate or professional degree FT within one year
25.4%	30	Pursuing graduate or professional degree PT within one year
17.8%	21	Pursuing graduate or professional degree within 2-3 years
0.0%	0	Pursuing another BA/BS degree
15.3%	18	Promoted as a result of completing degree
36.4%	43	Seeking advancement opportunities with current employer
26.3%	31	Seeking advancement opportunities with another employer
96.6%	114	Satisfactorily Occupied *

* Satisfactorily occupied is defined as those who are employed full-time in a field related to their major, employed full-time in a field outside of their major, employed full-time in the military, employed part-time in their field by choice, continuing education (FT), or not seeking employment.

These statistics have been collected from degree-completion graduates in Management and Nursing.

*Prepared by the Career Development Center
August 2011*

MALONE UNIVERSITY

Class of 2010

Graduate Programs Alumni Status Report – Summary

General Information

	5	Master of Arts in Christian Ministries graduates
	65	Master of Arts in Education graduates
	63	Master of Business Administration graduates
	22	Master of Science in Nursing graduates
	155	Total all Master's graduates
72.3%	112	Number responding to the survey

Information Regarding All Responding to Survey

83%	93	Full-time employed in field related to major
8%	9	Full-time employed in field outside of major
91.1%	102	Total Employed Full-time
3.6%	4	Part-time employed in field of major (by choice)
1.8%	2	Not seeking employment or further education
16.1%	18	Promoted as a result of completing degree
28.6%	32	Seeking advancement opportunities with current employer
17.9%	20	Seeking advancement opportunities with another employer
96.4%	108	Satisfactorily Occupied *

* Satisfactorily occupied is defined as those who are employed full-time in a field related to their major, employed full-time in a field outside of their major, employed full-time in the military, part-time employed in their field by choice, continuing education, or not seeking employment.

These statistics have been collected from graduates in all Graduate Programs.

*Prepared by the Career Development Center
August 2011*

Degree-Completion Alumni Status Report - Class of 2010

Employment and Graduate School Information as of August 2011

Major or Double Major (+)	Grads	# of Responses	FT/ In	FT/ Out	PT/ In	Seeking	Not Seeking	Another BA/BS or Cert	Grad Sch FT w-in 1 yr	Grad Sch PT w/in 1 yr	Grad Sch w/in 2-3 yrs
Management	124	78	52	14		4			8	17	18
Marketing Management	7	6	4	2						1	
Organizational Management	25	16	13	2					1	3	2
Project Management	2	2	2								1
Nursing *	22	16	13		2				1	9	
TOTAL	180	118	84	18	2	4	0	0	10	30	21
Percentages		65.6	71.2	15.3	1.7	3.4	0.0	0.0	8.5	25.4	17.8

* Working part-time by choice

Graduate Programs Alumni Status Report - Class of 2010

Employment Information as of August 2011

Major or Double Major (+)	Grads	# of Responses	FT/ In	FT/ Out	PT/ In	Seeking	Not Seeking
Christian Ministries *	2	1			1		
Classroom Guidance	2	2	2				
Clinical Counseling	19	14	9	2	2		1
Clinical Nurse Specialist *	2	2	1		1		
Community Counseling	2	2	1	1			
Curriculum & Instruction	4	3	2				1
Curriculum, Instr, & Prof Dev	4	3	3				
Family Nurse Practitioner *	20	14	12		2		
Intervention Specialist	17	12	12				
Leadership in the Church	2	2	1	1			
Leadership in Sports Min	1	0					
MBA	63	47	43	2	1	1	
Reading	2	1	1				
School Counseling	15	9	6	3			
TOTAL	155	112	93	9	7	1	2
Percentages		72.3	83.0	8.0	6.3	0.9	1.8

* Working part-time by choice

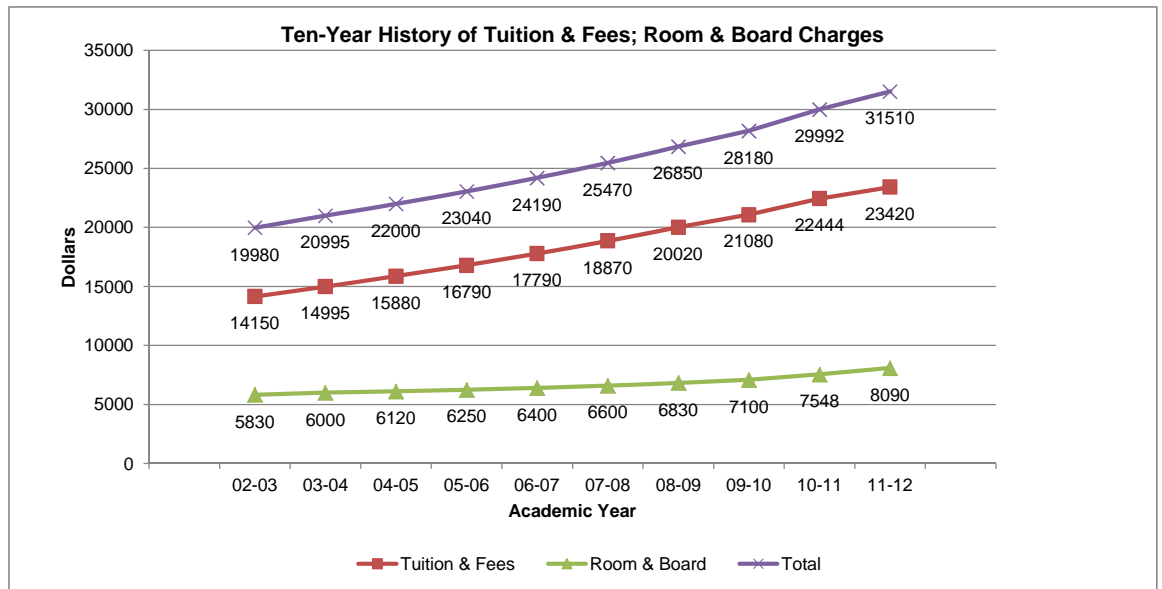
Prepared by the Career Development Center
August 2011

Section V

Financial Data

TEN-YEAR HISTORY OF TUITION & FEES; ROOM & BOARD CHARGES

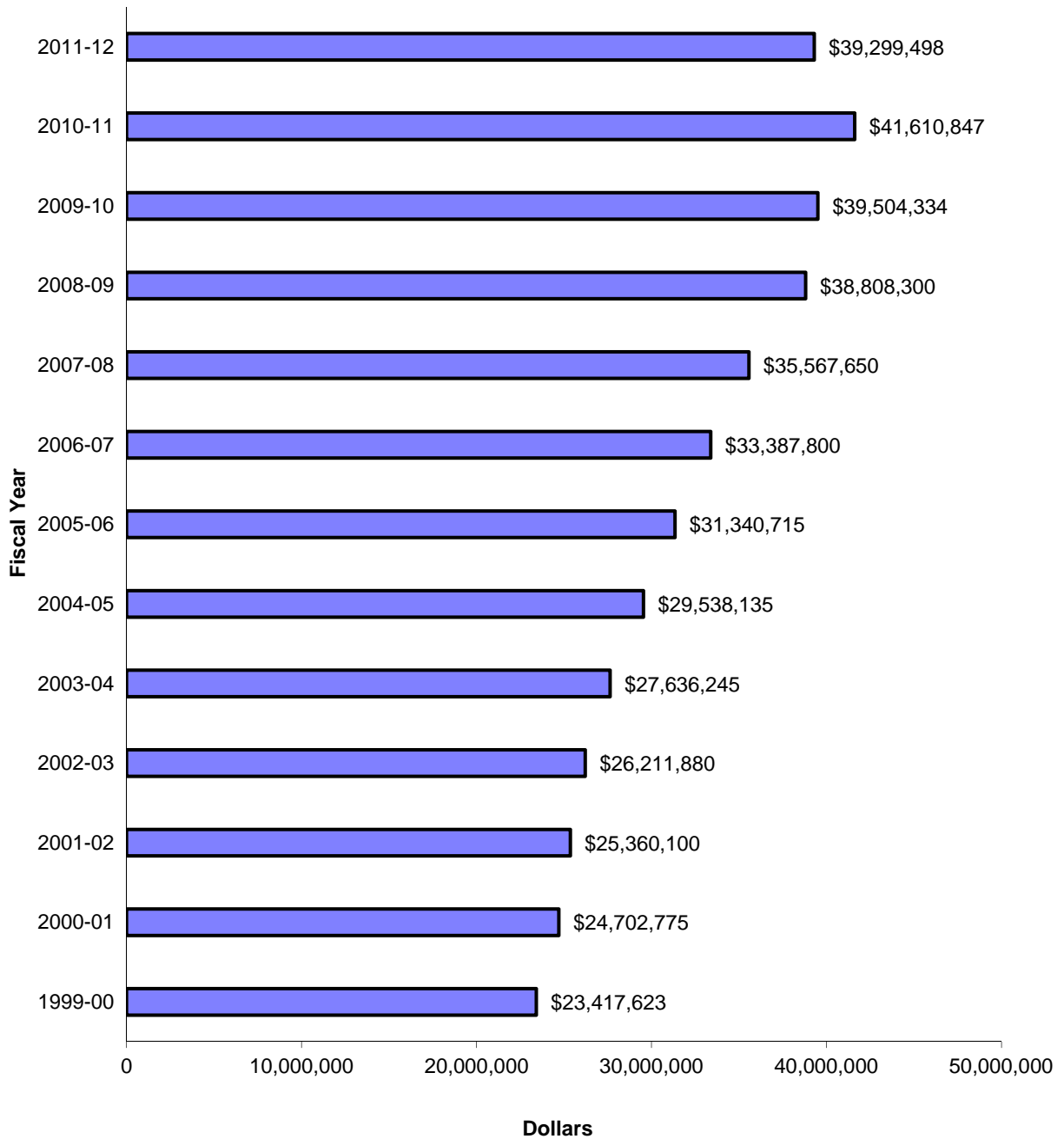
	2002-03	2003-04	2004-05	2005-06	2006-07	2007-08	2008-09	2009-10	2010-11	2011-12
Per year for 24-36 credits Comprehensive Fee	13910 <u>240</u>	14745 <u>250</u>	15630 <u>250</u>	16530 <u>260</u>	17520 <u>270</u>	18600 <u>270</u>	19740 <u>280</u>	20730 <u>350</u>	21954 <u>490</u>	22832 <u>588</u>
Commuting Student Total	14,150	14,995	15,880	16,790	17,790	18,870	20,020	21,080	22,444	23,420
Room Board (Carte Blanche) Room and Board	3150 <u>2680</u> 5830	3200 <u>2800</u> 6000	3250 <u>2870</u> 6120	3250 <u>3000</u> 6250	3300 <u>3100</u> 6400	3400 <u>3200</u> 6600	3480 <u>3350</u> 6830	3620 <u>3480</u> 7100	3848 <u>3700</u> 7548	4222 <u>3868</u> 8090
Resident Student Total	19,980	20,995	22,000	23,040	24,190	25,470	26,850	28,180	29,992	31,510



TEN-YEAR HISTORY OF % INCREASES IN TUITION & FEES; ROOM & BOARD

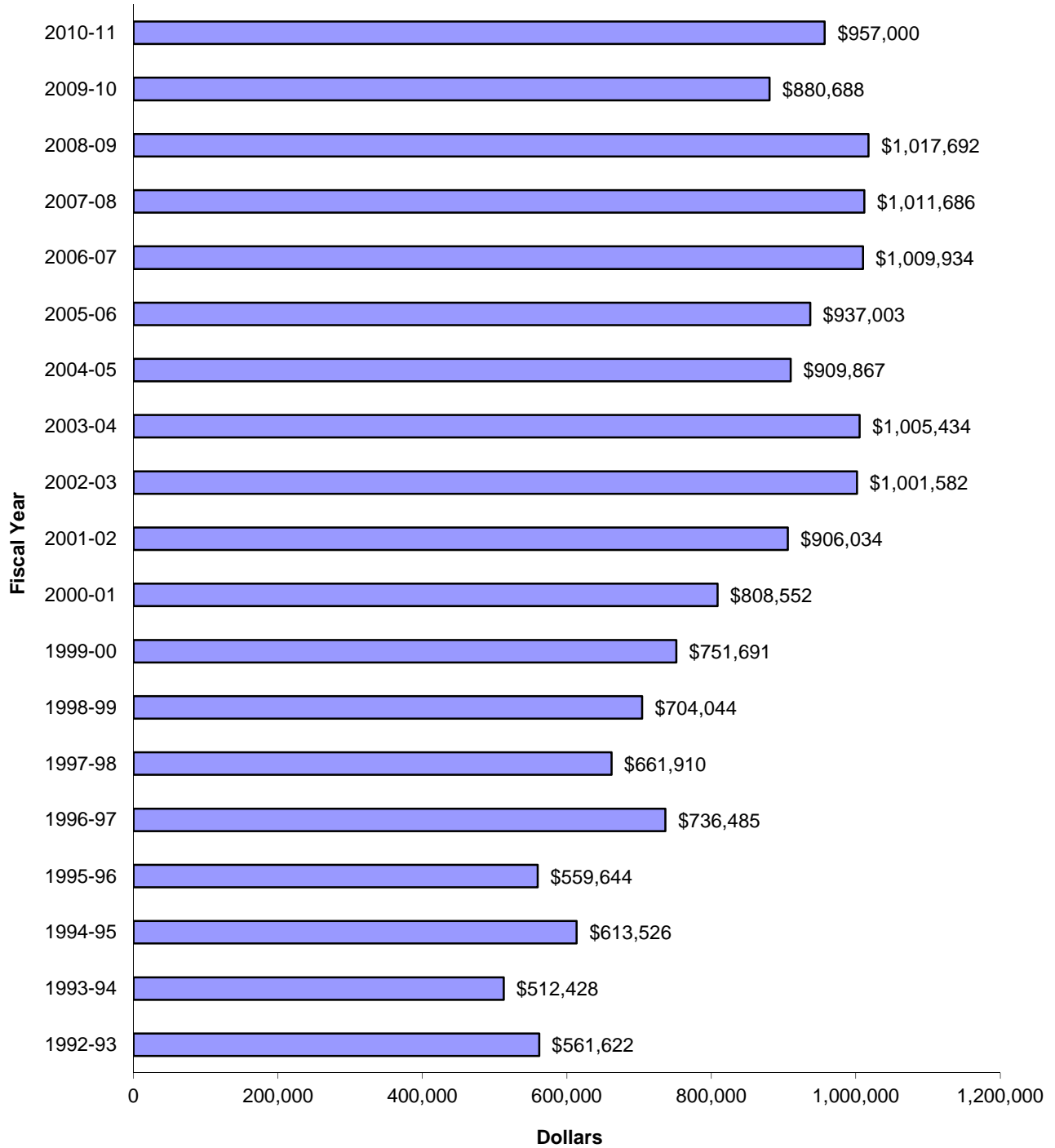
	2002-03	2003-04	2004-05	2005-06	2006-07	2007-08	2008-09	2009-10	2010-11	2011-12
Per year for 24-36 credits Comprehensive Fee	4.51 <u>0.00</u>	6.00 <u>4.17</u>	6.00 <u>0.00</u>	5.76 <u>4.00</u>	5.99 <u>3.85</u>	6.16 <u>0.00</u>	6.13 <u>3.70</u>	5.02 <u>25.00</u>	5.90 <u>40.00</u>	4.00 <u>20.00</u>
Commuting Student Total	4.43	5.97	5.90	5.73	5.96	6.07	6.09	5.29	6.47	4.35
Room Board (Carte Blanche) Room and Board	1.61 <u>5.51</u> 3.37	1.59 <u>4.48</u> 2.92	1.56 <u>2.50</u> 2.00	0.00 <u>4.53</u> 2.12	1.54 <u>3.33</u> 2.40	3.03 <u>3.23</u> 3.13	2.35 <u>4.69</u> 3.48	4.02 <u>3.88</u> 3.95	6.30 <u>6.32</u> 6.31	9.72 <u>4.54</u> 7.18
Resident Student Total	4.12	5.08	4.79	4.73	4.99	5.29	5.42	4.95	6.43	5.06

Total Budget for Fiscal Years 1999-00 to 2011-12



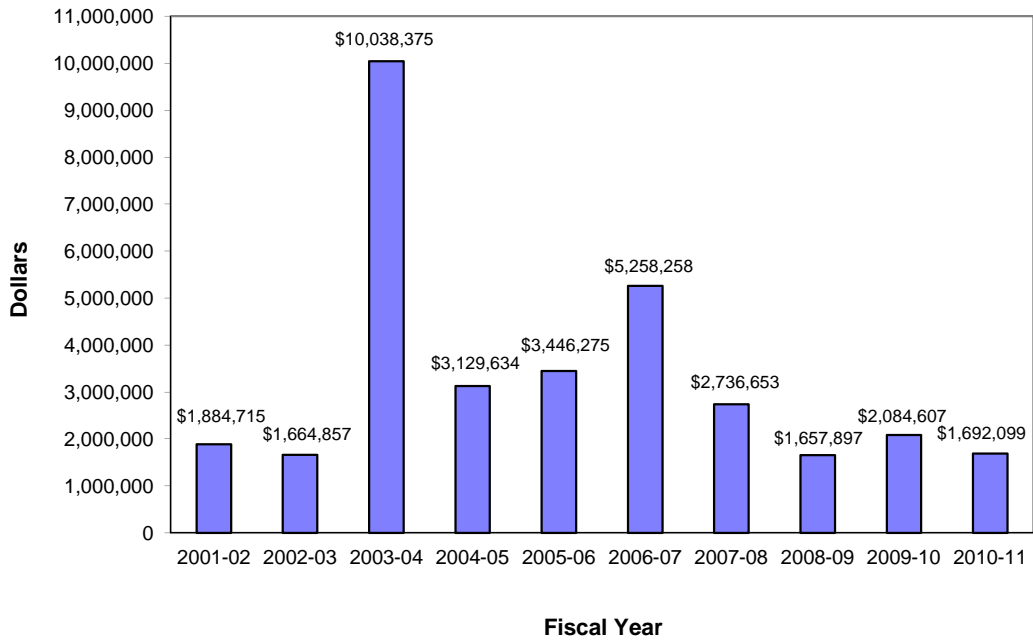
■ Budget = Gross Revenue Less Institutional Student Financial Aid

The Malone Fund Gift Income for Fiscal Years 1992-93 to 2010-11



■ Unrestricted Giving

Total Gift Income



Note: The 2003-04 amount includes \$8,163,229 (81% of total) for the Endowment/Capital Campaign.

Gift Income by Source: 2010-11

